

Please include the following attribution when using any part of this presentation information in a report, presentation, article, etc.

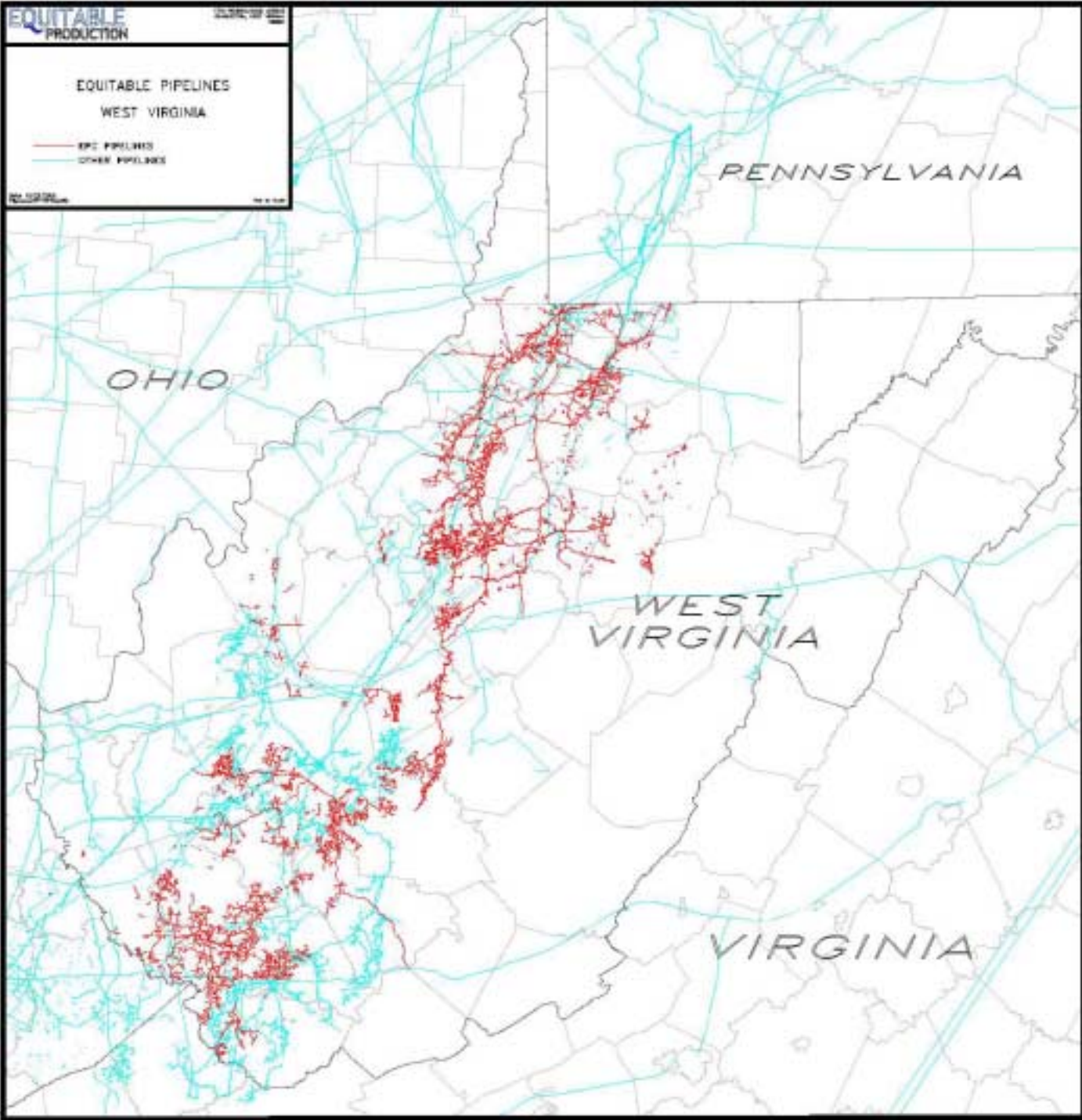
Presented by Curt Tipton, Equitable Gas, at the West Virginia Coal Bed Natural Gas Workshop on Oct. 29, 2003 at Stonewall Resort, Roanoke, WV. This meeting was a part of the Energy Roadmap Workshop Series commissioned by West Virginia Governor Bob Wise.

EQUITABLE PRODUCTION

**EQUITABLE PIPELINES
WEST VIRGINIA**

— EPC PIPELINES
— OTHER PIPELINES

REL/2012/04 10/12/12



Equitable Field Services

- Natural Gas Quality Specifications
 - BTU Content no lower than 967
 - Total Inert Gases equal to or less than 4.0%
(inert gases consist of N₂, O₂, CO₂ and others)
 - CO₂ (Carbon Dioxide) equal to or less than 1.25%
 - O₂ (Oxygen) equal to or less than 0.20%
 - H₂S (Hydrogen Sulfide) equal to or less than 0.25 grains